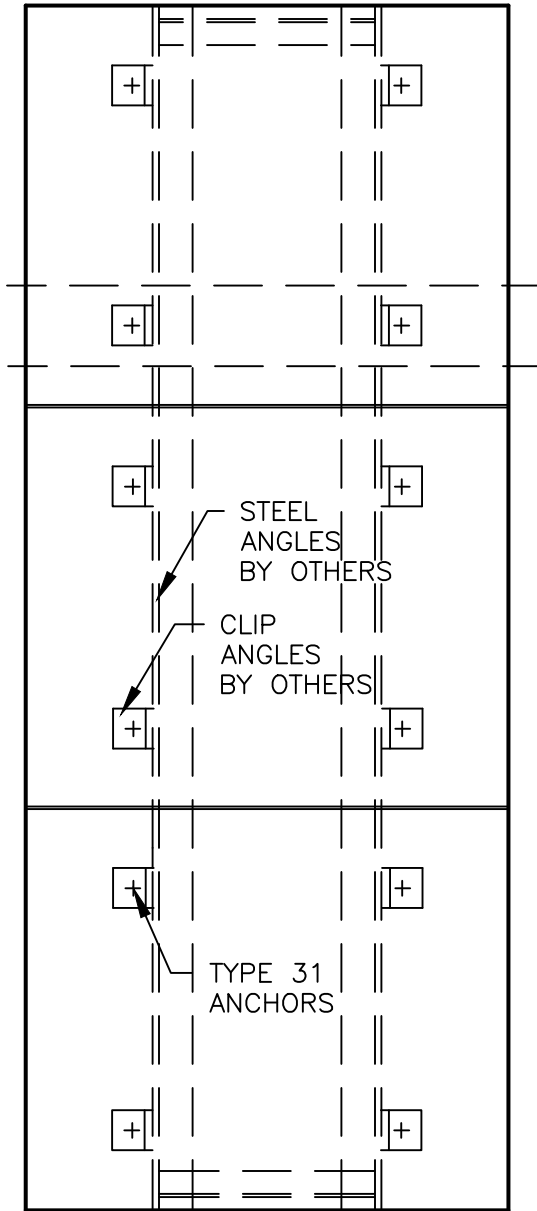


ANCHORING DETAILS ARE FOR REFERENCE ONLY. FINAL SPECIFICATIONS AND DETAILS SHOULD BE APPROVED BY A LICENSED ENGINEER.

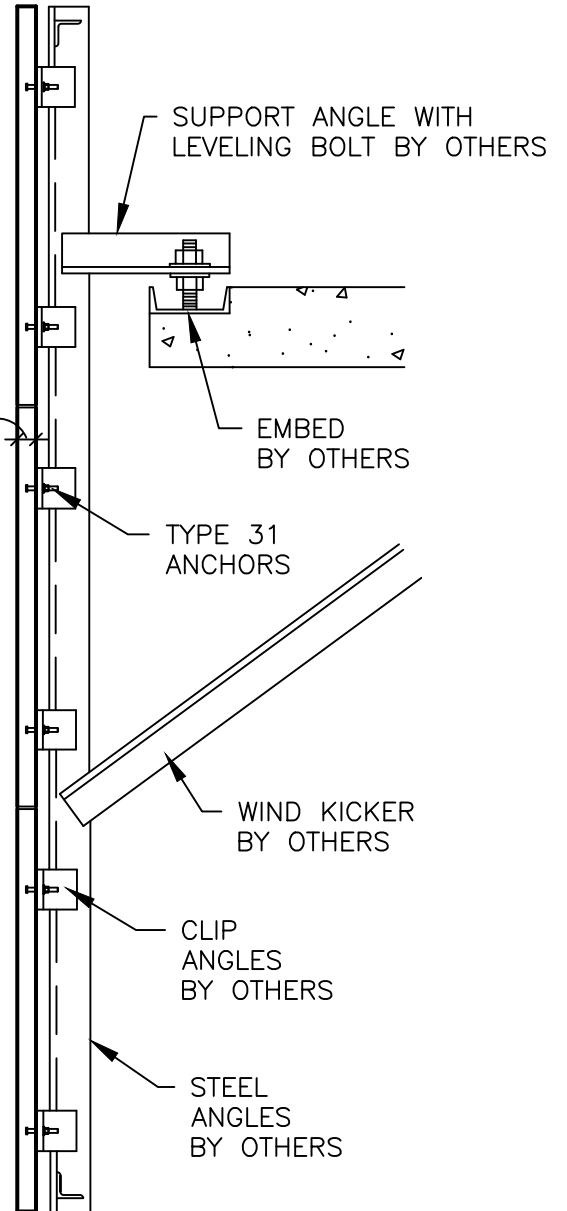
TYPE 31 TORQUE REQUIREMENTS:

- 3/16" DIA. = 35 TO 40 IN. LBS.
- 1/4" DIA. = 70 TO 80 IN. LBS.
- 3/8" DIA. = 200 TO 220 IN. LBS.
- 1/2" DIA. = 400 IN. LBS.



ELEVATION

1 3/16" [30mm]
+1/8"-1/16"
[+3mm-1.5mm]



SECTION

DR-040(10Feb25)

DESCRIPTION:

STONE FACING ON TRUSS FRAME
30mm

SHEET #:

SCALE:

1" = 1'-0"

DRAWN BY:

LB/KM

DATE:

3/7/2025



COLDSPRING®

17482 GRANITE WEST ROAD, COLD SPRING, MN 56320
PHONE 320.685.3621 | WWW.COLDSPRINGUSA.COM