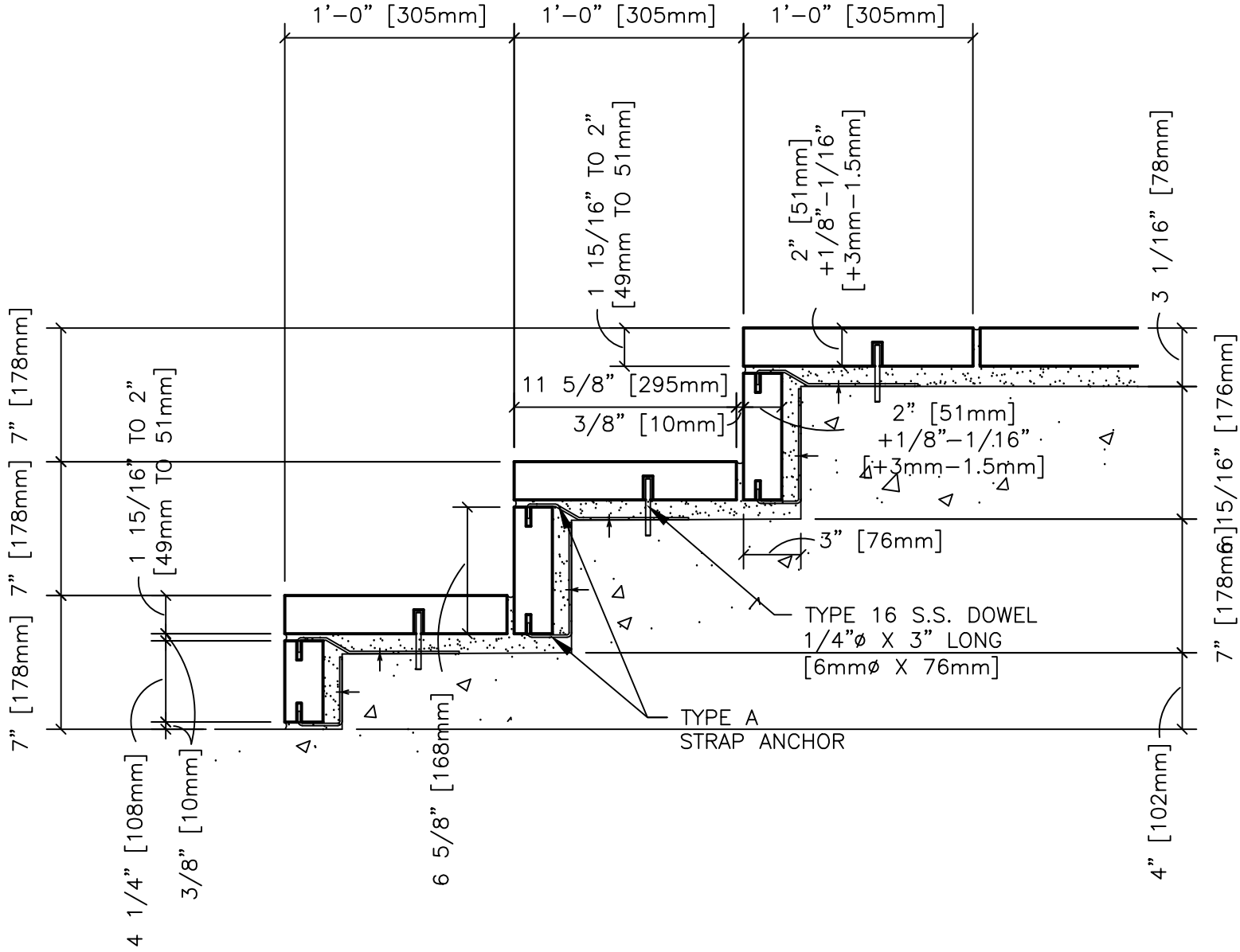


ANCHORING DETAILS ARE FOR REFERENCE ONLY. FINAL SPECIFICATIONS AND DETAILS SHOULD BE APPROVED BY A LICENSED ENGINEER.



VENEERED TREAD AND RISER

DR-040(10Feb25)

COLDSPRING®
 17482 GRANITE WEST ROAD, COLD SPRING, MN 56320
 PHONE 320.685.3621 | WWW.COLDSPRINGUSA.COM

DESCRIPTION: STAIR TREAD WITH RISER VENEERED	
SHEET #:	DATE: 3/5/2025
SCALE: 1 1/2" = 1'-0"	DRAWN BY: LB/KM