

ANCHORING DETAILS ARE FOR REFERENCE ONLY. FINAL SPECIFICATIONS AND DETAILS SHOULD BE APPROVED BY A LICENSED ENGINEER.

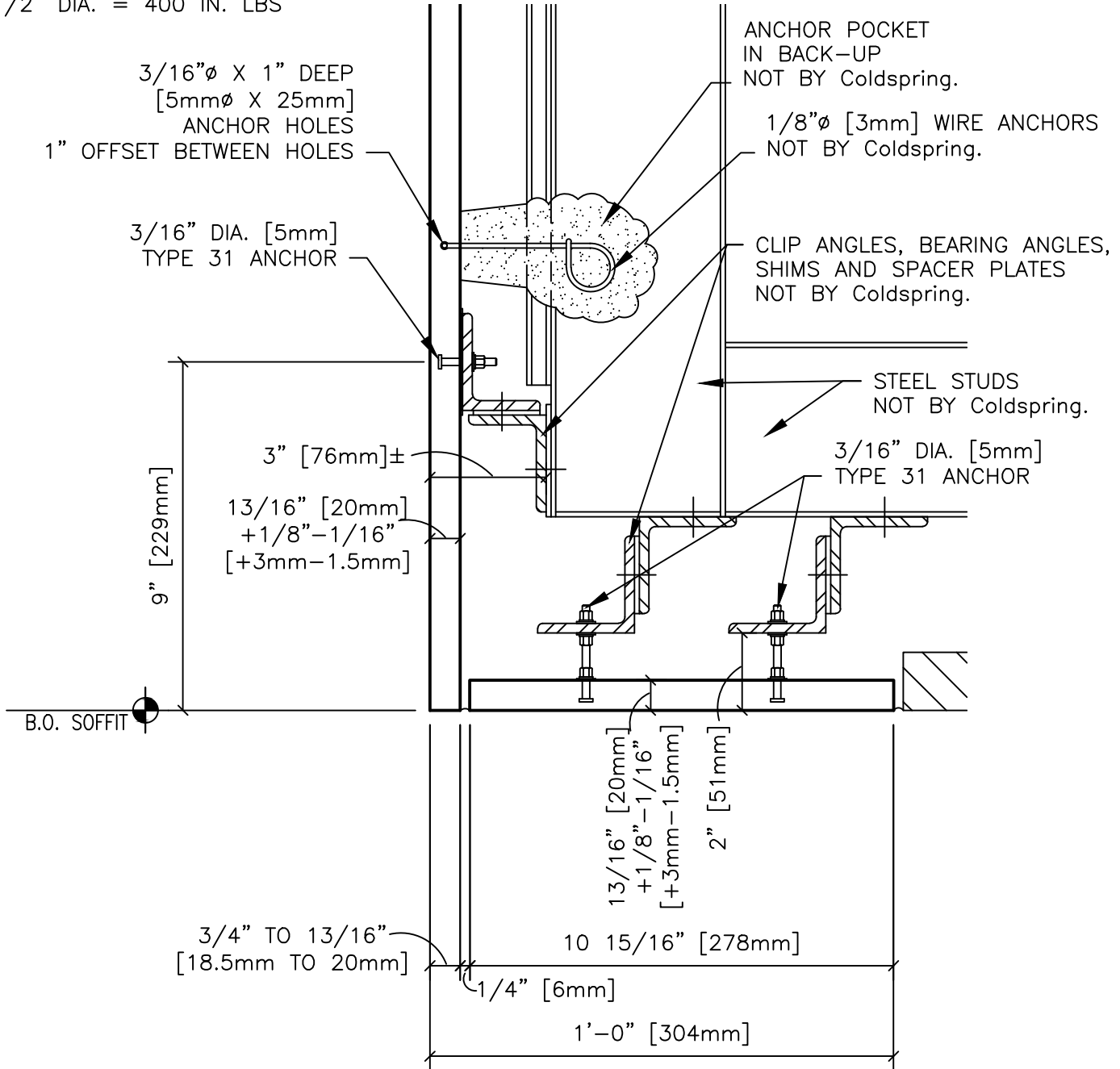
TYPE 31 TORQUE REQUIREMENTS:

3/16" DIA. = 35 TO 40 IN. LBS.

1/4" DIA. = 70 TO 80 IN. LBS.

3/8" DIA. = 200 TO 220 IN. LBS

1/2" DIA. = 400 IN. LBS



**GRANITE ONLY**

**SECTION E**

DR-040(10Feb25)

**DESCRIPTION:**

EXAMPLE INTERIOR WALL - SECTION E

20mm

**SHEET #:**

**SCALE:**

3" = 1'-0"

**DRAWN BY:**

LB/KM

**DATE:**

3/4/2025



**COLDSRING®**

17482 GRANITE WEST ROAD, COLD SPRING, MN 56320  
PHONE 320.685.3621 | WWW.COLDSRINGUSA.COM