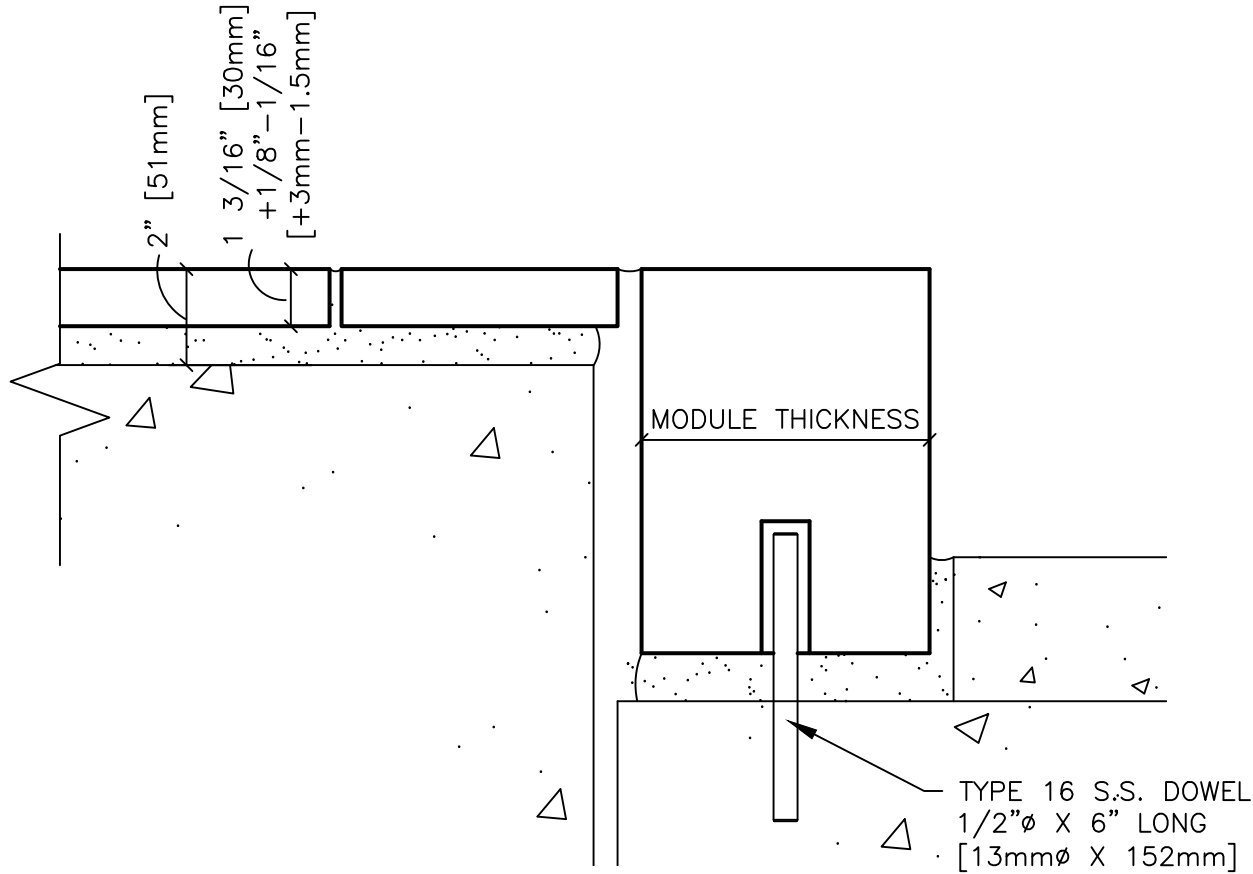
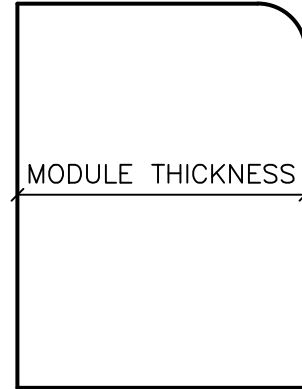
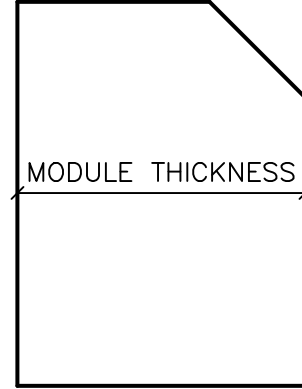


ANCHORING DETAILS ARE FOR REFERENCE ONLY. FINAL SPECIFICATIONS AND DETAILS SHOULD BE APPROVED BY A LICENSED ENGINEER.



CURB AND PAVING DETAIL

MODULE THICKNESS
3 7/8" + 1/8" - 1/16" [98mm +3mm -1.5mm]
6 1/8" ± 1/8" [155.5mm ± 3mm]
8" ± 1/8" [203mm ± 3mm]



ALTERNATE CURB PROFILES

DR-040(10Feb25)

COLDSRING®
 17482 GRANITE WEST ROAD, COLD SPRING, MN 56320
 PHONE 320.685.3621 | WWW.COLDSRINGUSA.COM

CURB AND PAVING DETAIL		DATE:	3/4/2025
		DRAWN BY:	LB/KM
SHEET #:		SCALE:	3" = 1'-0"