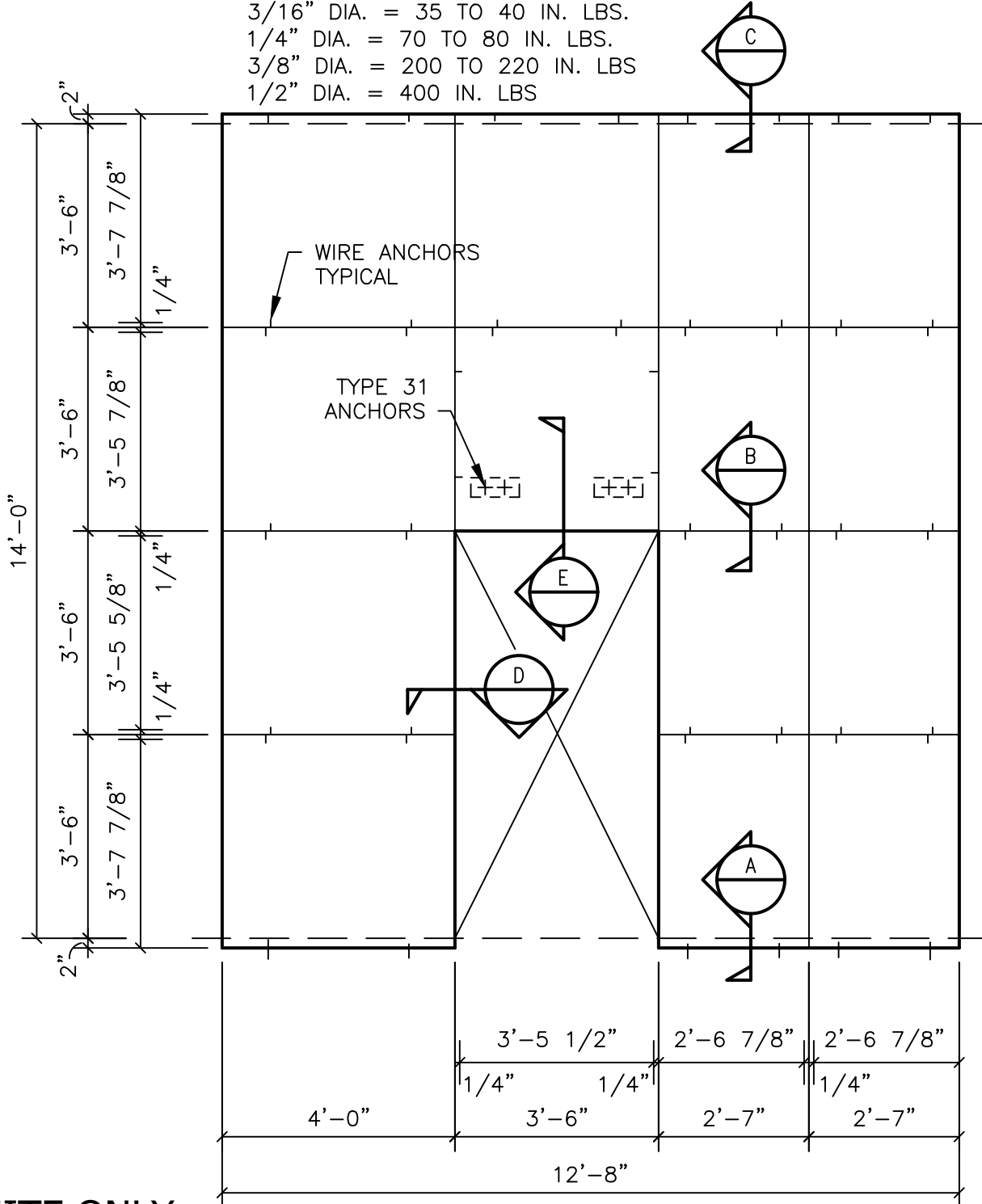


ANCHORING DETAILS ARE FOR REFERENCE ONLY. FINAL SPECIFICATIONS AND DETAILS SHOULD BE APPROVED BY A LICENSED ENGINEER.

TYPE 31 TORQUE REQUIREMENTS:

- 3/16" DIA. = 35 TO 40 IN. LBS.
- 1/4" DIA. = 70 TO 80 IN. LBS.
- 3/8" DIA. = 200 TO 220 IN. LBS
- 1/2" DIA. = 400 IN. LBS



**GRANITE ONLY**

DR-040(10Feb25)

**DESCRIPTION:**

EXAMPLE INTERIOR WALL ELEVATION  
20mm

**SHEET #:**

**SCALE:**

3/8" = 1'-0"

**DRAWN BY:**

LB/KM

**DATE:**

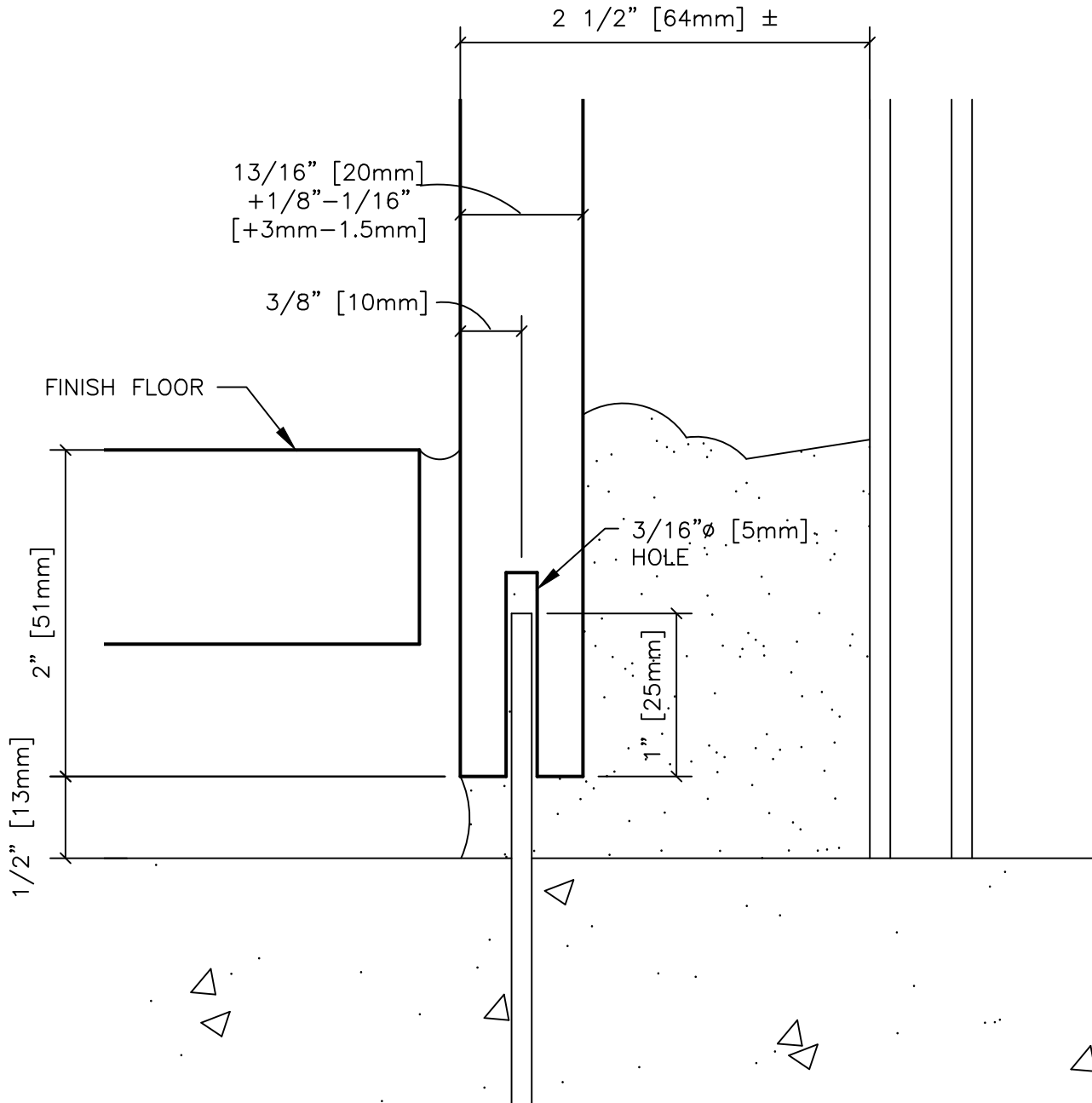
3/6/2025



**COLDSPRING®**

17482 GRANITE WEST ROAD, COLD SPRING, MN 56320  
PHONE 320.685.3621 | WWW.COLDSPRINGUSA.COM

ANCHORING DETAILS ARE FOR REFERENCE ONLY. FINAL SPECIFICATIONS AND DETAILS SHOULD BE APPROVED BY A LICENSED ENGINEER.



SECTION A

GRANITE ONLY

DR-040(10Feb25)

DESCRIPTION:

EXAMPLE INTERIOR WALL - SECTION A  
20mm

SHEET #:

SCALE:

FULL SIZE

DRAWN BY:

LB/KM

DATE:

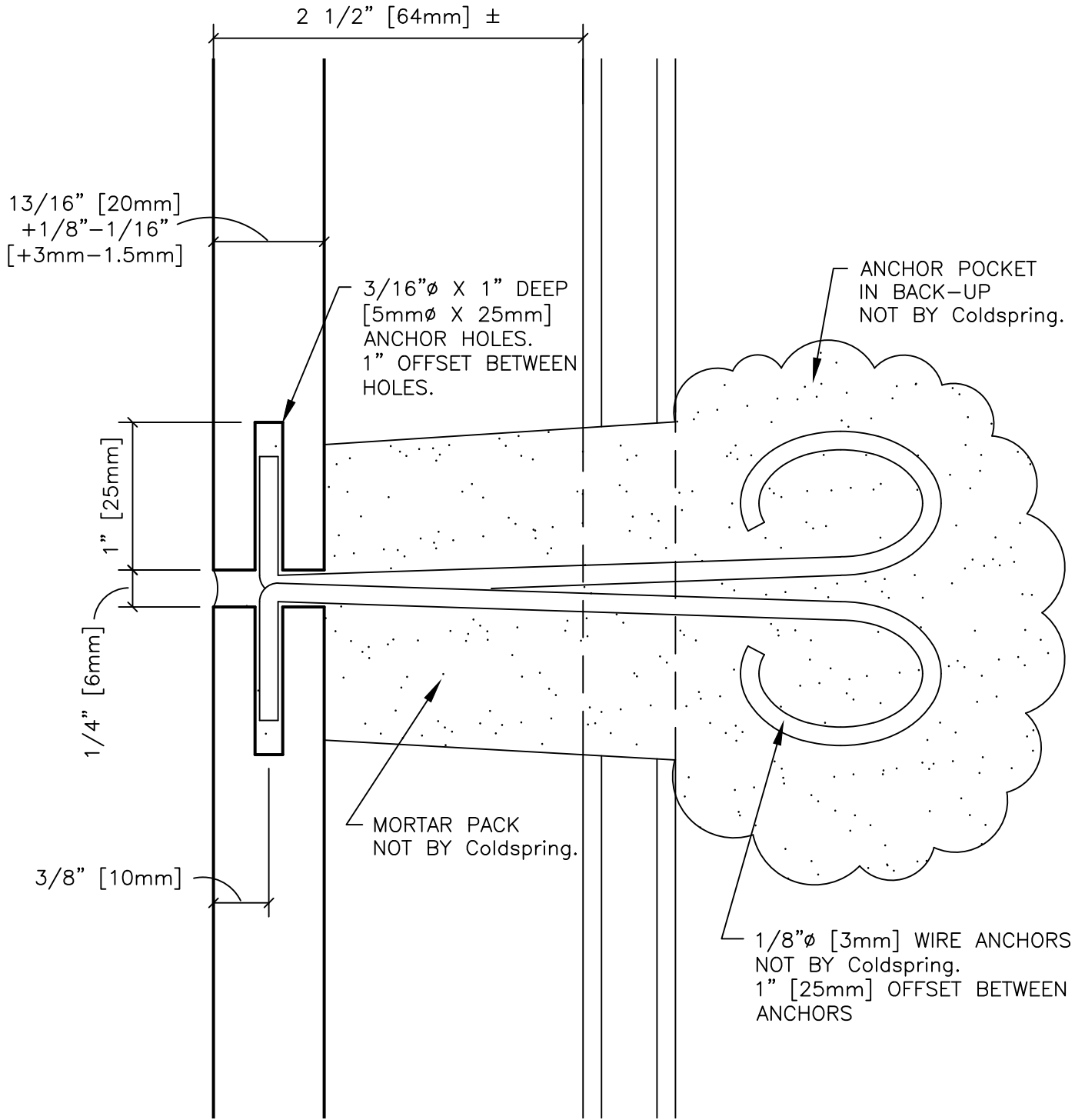
3/6/2025



COLDSPRING®

17482 GRANITE WEST ROAD, COLD SPRING, MN 56320  
PHONE 320.685.3621 | WWW.COLDSPRINGUSA.COM

ANCHORING DETAILS ARE FOR REFERENCE ONLY. FINAL SPECIFICATIONS AND DETAILS SHOULD BE APPROVED BY A LICENSED ENGINEER.



GRANITE ONLY

SECTION B

DR-040(10Feb25)

**DESCRIPTION:**

EXAMPLE INTERIOR WALL - SECTION B  
20mm

**SHEET #:**

**SCALE:**

FULL SIZE

**DRAWN BY:**

LB/KM

**DATE:**

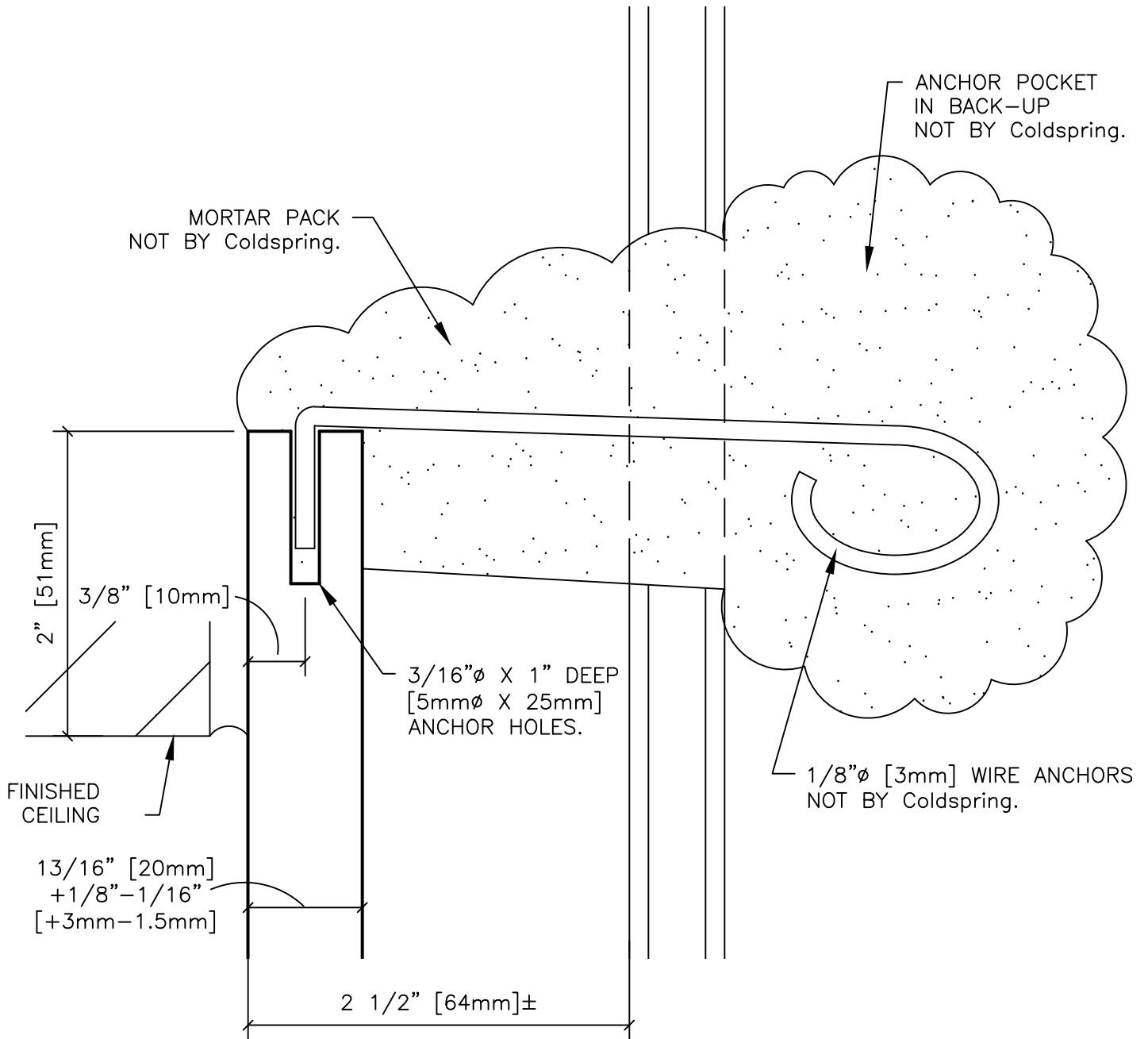
3/6/2025



**COLDSRING®**

17482 GRANITE WEST ROAD, COLD SPRING, MN 56320  
PHONE 320.685.3621 | WWW.COLDSRINGUSA.COM

ANCHORING DETAILS ARE FOR REFERENCE ONLY. FINAL SPECIFICATIONS AND DETAILS SHOULD BE APPROVED BY A LICENSED ENGINEER.



GRANITE ONLY

SECTION C

DR-040(10Feb25)

**DESCRIPTION:**

EXAMPLE INTERIOR WALL - SECTION C  
20mm

**SHEET #:**

**SCALE:**

FULL SIZE

**DRAWN BY:**

LB/KM

**DATE:**

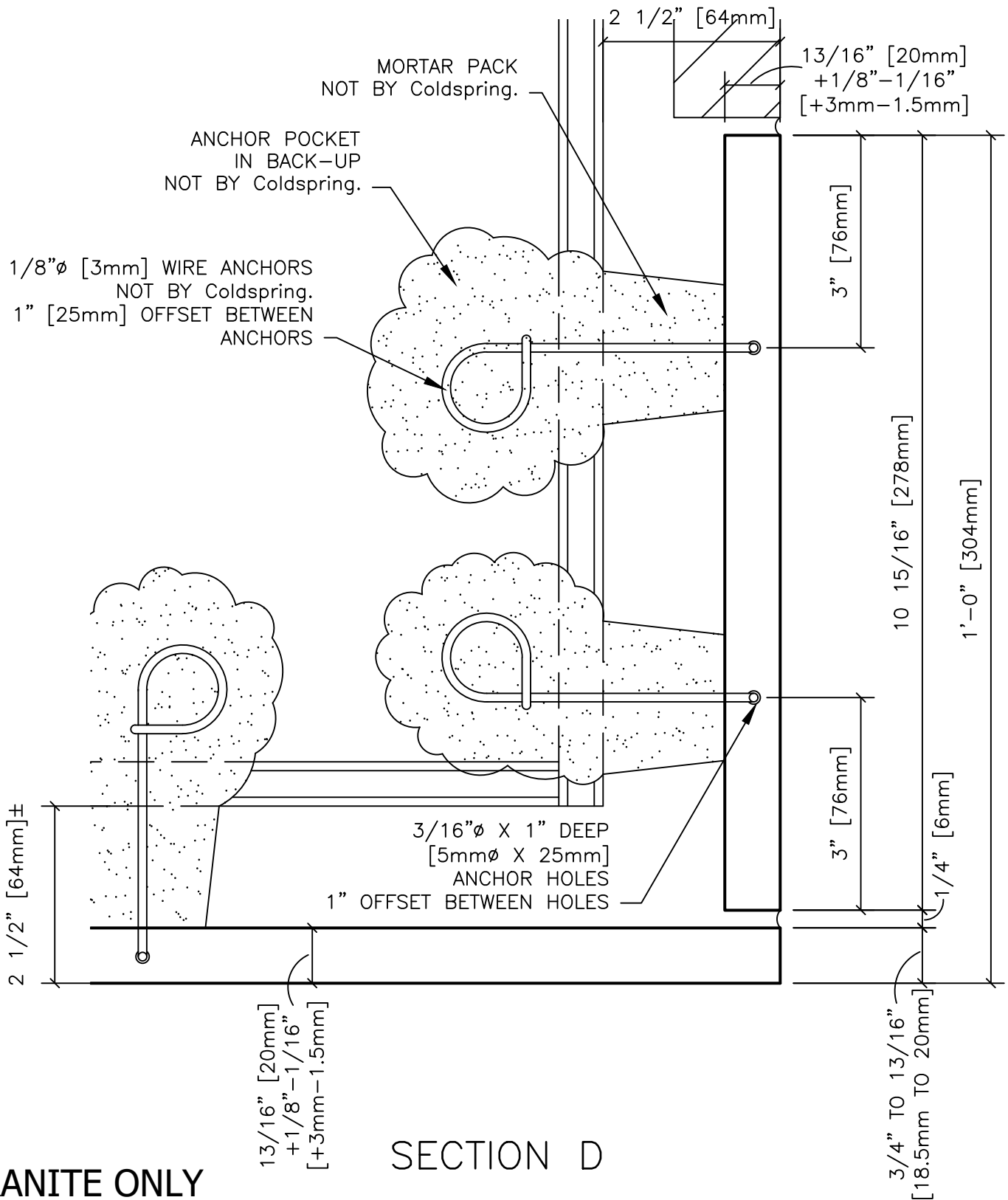
3/6/2025



**COLDSRING®**

17482 GRANITE WEST ROAD, COLD SPRING, MN 56320  
PHONE 320.685.3621 | WWW.COLDSRINGUSA.COM

ANCHORING DETAILS ARE FOR REFERENCE ONLY. FINAL SPECIFICATIONS AND DETAILS SHOULD BE APPROVED BY A LICENSED ENGINEER.



DR-040(10Feb25)

**DESCRIPTION:**

EXAMPLE INTERIOR WALL - SECTION D  
20mm

**SHEET #:**

**SCALE:**

6" = 1'-0"

**DRAWN BY:**

LB/KM

**DATE:**

3/6/2025



**COLDSRING®**

17482 GRANITE WEST ROAD, COLD SPRING, MN 56320  
PHONE 320.685.3621 | WWW.COLDSRINGUSA.COM

ANCHORING DETAILS ARE FOR REFERENCE ONLY. FINAL SPECIFICATIONS AND DETAILS SHOULD BE APPROVED BY A LICENSED ENGINEER.

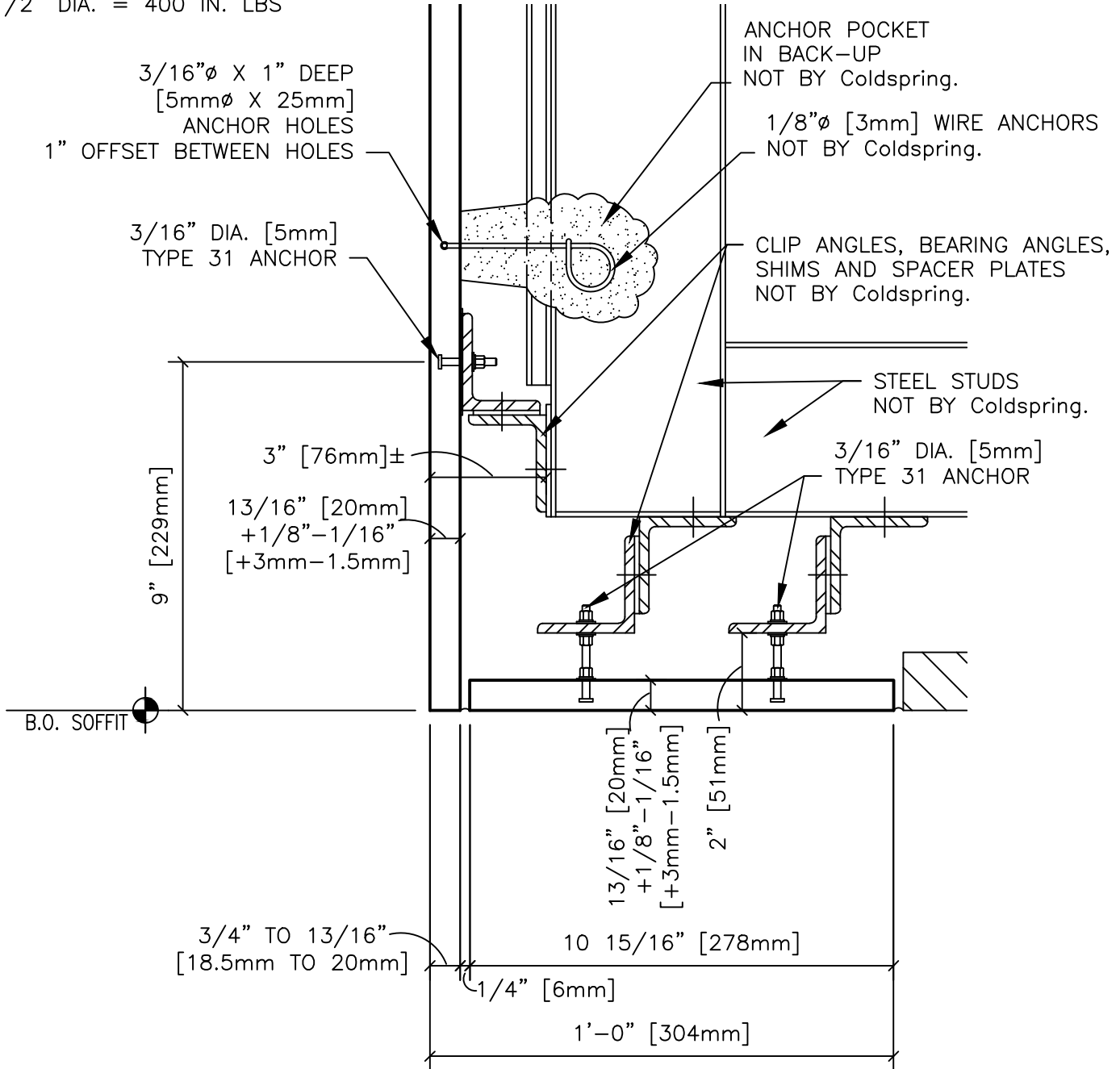
TYPE 31 TORQUE REQUIREMENTS:

3/16" DIA. = 35 TO 40 IN. LBS.

1/4" DIA. = 70 TO 80 IN. LBS.

3/8" DIA. = 200 TO 220 IN. LBS

1/2" DIA. = 400 IN. LBS



**GRANITE ONLY**

**SECTION E**

DR-040(10Feb25)

**DESCRIPTION:**

EXAMPLE INTERIOR WALL - SECTION E

20mm

**SHEET #:**

**SCALE:**

3" = 1'-0"

**DRAWN BY:**

LB/KM

**DATE:**

3/4/2025



**COLDSRING®**

17482 GRANITE WEST ROAD, COLD SPRING, MN 56320  
PHONE 320.685.3621 | WWW.COLDSRINGUSA.COM