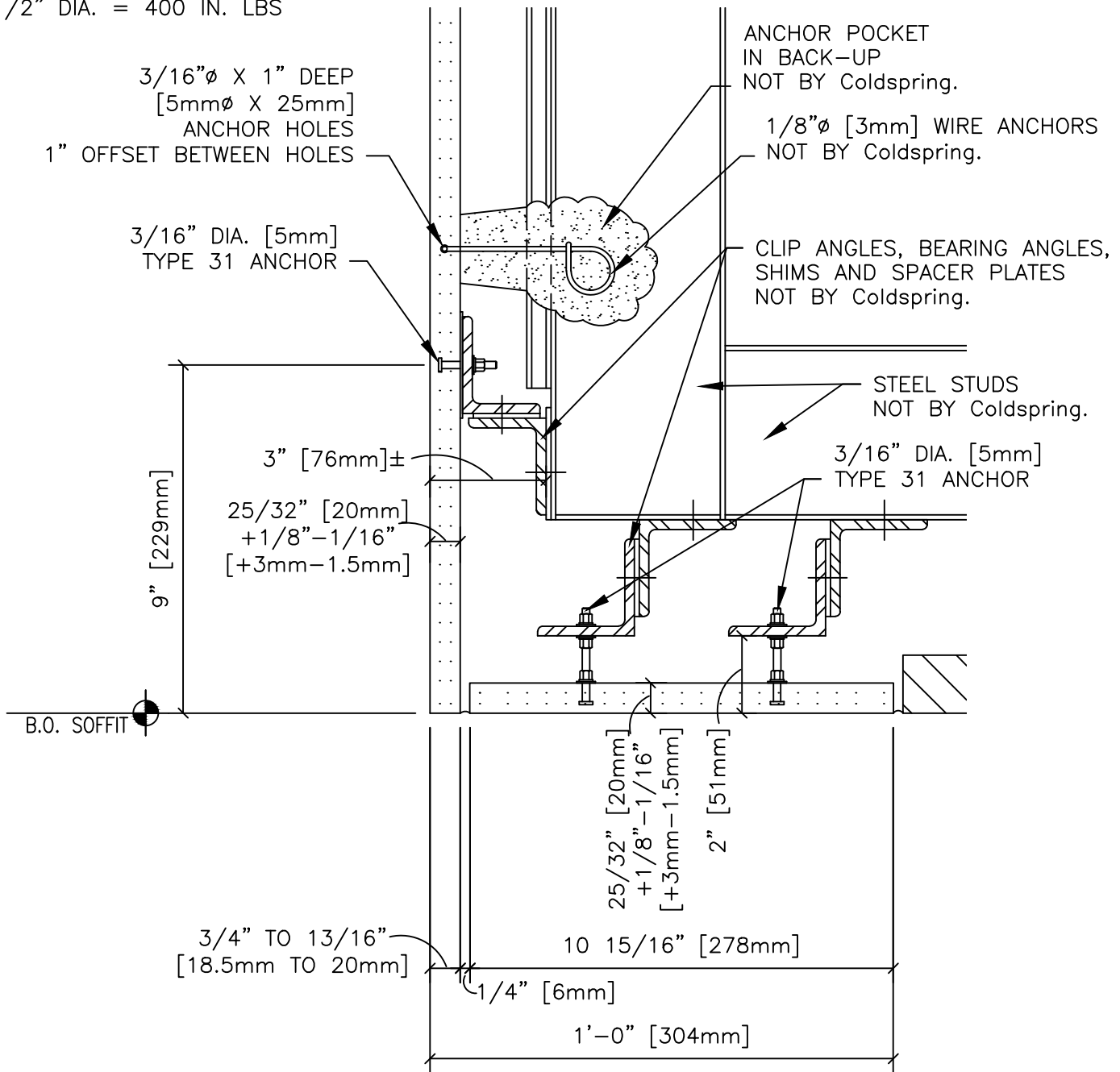


ANCHORING DETAILS ARE FOR REFERENCE ONLY. FINAL SPECIFICATIONS AND DETAILS SHOULD BE APPROVED BY A LICENSED ENGINEER.

TYPE 31 TORQUE REQUIREMENTS:  
 3/16" DIA. = 35 TO 40 IN. LBS.  
 1/4" DIA. = 70 TO 80 IN. LBS.  
 3/8" DIA. = 200 TO 220 IN. LBS.  
 1/2" DIA. = 400 IN. LBS



**GRANITE ONLY**

SECTION E

DESCRIPTION:

EXAMPLE INTERIOR WALL - SECTION E  
 20mm

SCALE:

3" = 1'-0"

DRAWN BY:

LB/KM

DATE:

9-18-13



**COLDSRING™**

17482 GRANITE WEST ROAD, COLD SPRING, MN 56320-4578  
 PHONE (320) 685-3621, FAX (320) 685-5052  
 WWW.COLDSRINGUSA.COM